

## UltraD Ultrasonic Water Meters

### Features

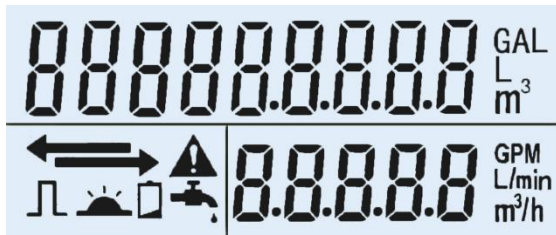
- Superior hydraulic design, no moving parts, nothing mechanical to maintain
- Advanced ultrasonic technology for precise and ultra reliable metering
- Extremely wide turndown ratio (R=500)
- Excellent long-term stability and reliability
- Extremely sensitive and accurate in low flow
- Battery powered - 20 years life expectancy
- Made with highly durable materials - epoxy coated cast iron, stainless steel (304, 316, 316L), available for medicine and health as well as sea water metering
- Ruggedized construction - Fully submersible design (IP68)



### Technical Specifications

<b>Maximum Working Pressure</b>	1.6MPa
<b>Temperature Class</b>	T30, T50 (Higher temperature customizable)
<b>Accuracy Class</b>	Class 2 (ISO4064:2005, Class 1 customizable)
<b>Battery Life</b>	20 years
<b>Configuration</b>	Compact - The display is built into the unit
<b>Ingress Protection</b>	IP68
<b>Environment Temperature</b>	-20~70°C, ≤100%RH
<b>Pressure Loss</b>	Δ p10
<b>Climatic and Mechanical Environment</b>	Class C
<b>Display</b>	8 digit LCD Display + prompts Cumulative flow (m <sup>3</sup> ), Instantaneous flow (m <sup>3</sup> /h), Flow direction, Alarm, Battery level, Output mode, etc.
<b>Connections</b>	Threads (DN15-40), Flanges (DN50-300) according to DIN (EN1092-1) (Other standards customizable)
<b>Electromagnetic Environment Class</b>	E2
<b>Flow Profile Sensitivity</b>	U3/D0
<b>Date Storage</b>	Store the data in last 7×24h, 365 days and 72 months
<b>Output (optional)</b>	RS485 (ModBus), M-Bus, OCT pulse, two wire 4-20mA
<b>Accessories</b>	Wireless GPRS/GSM, Wireless handheld operator
<b>Standards</b>	ISO4064: 2005, EN14154
<b>Related Patents</b>	ZL 2011 2 0033304.X, ZL 2012 3 0466985.9

## Digital Display



**m<sup>3</sup>** Volume units  
**m<sup>3</sup>/h** Flowrate units  
**Leak detect**  
**IR Communication**



**Flow direction**  
**Low battery alert**  
**Pulse output**  
**Alarm**

## Applications

UltraD can be widely used in utilities, waterworks, commercial, industrial, agricultural, medicine and health application as well as seawater and corrosive fluid metering.

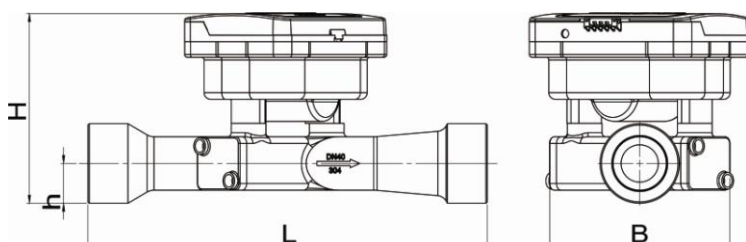
## Measuring Range

Nominal Size	(mm)	15	20	25	32	40	50	65	80	100	150	200	250	300	
	(inch)	1/2	3/4	1	1 1/4	1 1/2	2	2 1/2	3	4	6	8	10	12	
Starting Flow (m <sup>3</sup> /h)		0.0025	0.0025	0.0032	0.005	0.01	0.01	0.013	0.03	0.05	0.1	0.2	0.3	0.5	
Q1 (m <sup>3</sup> /h)		0.006	0.025	0.04	0.1	0.08	0.08	0.13	0.13	0.2	0.5	0.8	2.0	2.0	
Q2 (m <sup>3</sup> /h)		0.008	0.04	0.064	0.160	0.128	0.128	0.2	0.2	0.32	0.8	1.28	3.2	3.2	
Q3 (m <sup>3</sup> /h)		1.6	6.3	10	25	40	40	63	63	100	250	400	1000	1000	
Q4 (m <sup>3</sup> /h)		2	7.875	12.5	31.3	50	50	80	80	125	313	500	1250	1250	
R - Q3/Q1		250					500								

## Dimensions

Nominal Size	(mm)	15	20	25	32	40	50	65	80	100	150	200	250	300	
	(inch)	1/2	3/4	1	1 1/4	1 1/2	2	2 1/2	3	4	6	8	10	12	
L- Length (mm)		130	130	150	260	300	200	200	225	250	300	350	450	500	
B - Width (mm)		96	96	96	90	130	125	142	186	204	285	340	395	445	
H - Height (mm)		111	115	120	130	132	180	185	213	226	280	327	374.5	414.5	
h - Height (mm)		14	18	23	19	20	65	68	93	102	142.5	170	197.5	222.5	
Weight (kg)-SS		1.0	1.2	1.4	4.8	6.5	9	11	13	16	29	46	60	74	
Weight (kg)-Cast Iron							6	6.5	13	16	30	45	55	68	
Installation		Threaded					Flanged								

Threaded



Flanged

