

# CF 55

## Heat & cooling Meter Calculator

The CF 55 is the latest generation of calculators issued from Itron's CF Heat Meter Family.

It is designed for use by Heat/Cooling Utilities which face today's complex networks management.

High performance tools help the management of contracts with end clients, other tools gather all data necessary to analyse network performance. All different data is available directly or through the wide communication choices.

### Applications

Heating, Cooling and combined applications.

### Standards Compliance

- > MID 2004/22/EC Module D
- > Env. Class C acc. EN 1434
- > PTB approved

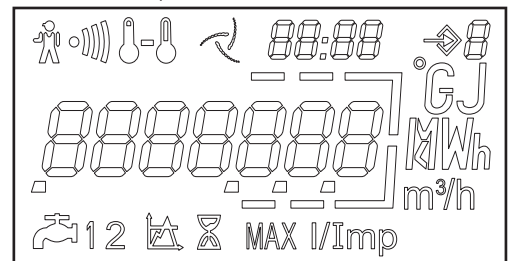
### Benefits

- > Easy to use
- > Works with any flow meter with a pulse output
- > High value added functions
- > Clear informations
- > Powerful capacities

## Multifunctional Display

The multifunctional display facilitates easy reading, providing fast and clear access to the most important billing data. The display enables the diagnosis of failures alarms from a single glance.

The LCD has a long life time and through a push button you get easily access to each level of data.



### ▶ Loop 1

#### Billing Data

- > Energy
- > **Cooling energy\***
- > Volume
- > LCD test
- > **External water meter 1/2\***

\* *Optional*

### ▶ Loop 2

#### Additional Information

- > Flow rate
- > Power
- > Supply temperature
- > Return temperature
- > Temperature difference
- > Operating time
- > **Power peak date + time\***
- > **Flow peak date + time\***
- > **Temperature peak date + time\***
- > **Instantaneous bonus\***
- > **Cumulative bonus\***
- > Time in alarm
- > Temperature alarm
- > Flow alarm
- > Overflow alarm
- > Power supply alarm
- > **Current time + date\***
- > M-Bus primary address
- > M-Bus secondary address
- > M-Bus baud rate
- > **Pulse value water meter 1/2\***

\* *Optional*

### ▶ Loop 3

#### Fixed Date Reading

- > Fixed date energy 1...13
- > Fixed date cooling energy 1...13
- > Fixed date volume 1...13
- > **Fixed date water meter 1/2 1...13\***
- > Software version

\* *Optional*



- > *Complex Tariff Manager*
- > *Powerful Datalogger*
- > *Plug and Play Communication Boards*
- > *4 wire*

## Peak

Three different base units are traced for its peak values in this tool. The integration time is adaptable to the different needs going from 1 minute to 24 hours for fixed window time sets. All values are time stamped for further comprehension and analysis and stored throughout the 13 fixed date reading months for permanent follow up.

Power (W)  
Flow (m<sup>3</sup>/h)  
Supply Temperature (°C)

## Tariffication

The double tariffication is an advanced tool giving the possibility to utilities and clients set high performance network management indicators. It traces both the quality of supply

as well the quality of consumption giving both parties a major advantage in the cost effective heat usage.

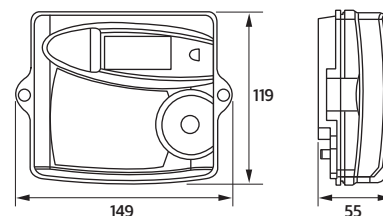
Power (W)  
Flow (m<sup>3</sup>/h)  
Supply Temperature (°C)  
Return Temperature (°C)

## Data Logging

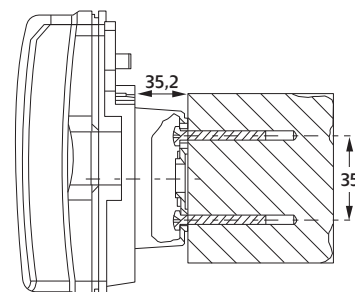
This is the exploitation, s tool by excellence. Studies of the network performance, analysis of determined consumptions or simply the trace of a seasons pattern are possible with this powerful tool.

Select up to 6 registers from a list containing above 20 available and log them through 1008 steps programmable from a minute by minute up to weekly or monthly registration.

## Dimensions



### > Wall mounting



## Option Boards

The CF 55 is pre-equipped for communication. Different option boards can be plugged simply to the meter and start working automatically.

The following option boards are available:

- > Board 1: **M-Bus + E/V Repetition**
- > Board 2: **M-Bus + 2 external Water meters**
- > Board 3: **Modem + 2 external Water meters**
- > Board 4: **LON + 2 external Water meters**
- > Board 5: **Radio + 2 external Water meters**
- > Board 6: **M-Bus + 2 external Water meters + power supply by M-Bus**
- > Board 7: **Double M-Bus output**

CF 55 Energy Calculator	
Metrology exceeds	PTB, DRIRE, OIML, EN 1434
Temperature range	0 ... 180 °C
Temperature difference	3 ... 160 K
Temperature sensors	Pt100 or Pt500, 4 wires
Display	LCD - 7 digits
Back-up memory	EEPROM
Power supply (optional)	6 or 12 year Lithium battery - 230 V main power supply or power supply by M-Bus
Protection class	IP64
Environmental class	Class C acc. EN 1434
Ambient temperature	5 ... 55 °C
Optical interface	EN 60870-5 / M-Bus protocol

CF 55 Pulse Value	
L/imp or imp/L	1, 2.5, 10, 25, 100, 250, 1000 L/imp or 2.5, 4.5, 7.5, 10, 25 imp/L

M-Bus	
Standard reference	EN 1434-3
Baud rate	300 to 2400 baud
Data in standard mode	Energy, Volume, Flow, Temperatures (supply, return, difference), Time in error, Operation time, Date and time, Volume of water meters 1&2, Firmware version

Radio Applications	
Compatibility	AnyQuest radio walk-by system EverBlu radio fixed network system (Q2-2010)
Frequency	433 MHz
Protocol	Radian open protocol

## About Itron Inc.

Itron Inc. is a leading technology provider to the global energy and water industries. Our company is the world's leading provider of metering, data collection and utility software solutions, with nearly 8,000 utilities worldwide relying on our technology to optimize the delivery and use of energy and water. Our products include electricity, gas and water meters, data collection and communication systems, including automated meter reading (AMR) and advanced metering infrastructure (AMI); meter data management and related software applications; as well as project management, installation, and consulting services. To know more, start here: [www.itron.com](http://www.itron.com)

For more information, contact your local sales representative or agency.

# Itron

Allmess GmbH  
Am Voßberg 11  
23758 Oldenburg i.H.  
Deutschland  
Phone: 0 43 61/62 5-0  
Fax: 0 43 61/62 5 -250  
[www.itron.com](http://www.itron.com)